

Data range of report	1/10/2024 to 31/12/2024	Rainfall Depth (mm)	124.6
----------------------	-------------------------	---------------------	-------

Dam Name	HWD8
----------	------

Latest field data		ML
pH	Minimum sensor level	
EC us/cm	Minimum pump level	
TSS mg/L	Spillway	
OG mg/L	Current level	

Notes

In accordance with the approved Water Management Plan, the catchment of HWD8 has been disturbed as part of mine progression and HWD8 is no longer a clean water dam

HWD Recorded Data



Data range of report	1/10/2024 to 31/12/2024	Rainfall Depth (mm)	124.6
----------------------	-------------------------	---------------------	-------

Dam Name	HWD9
----------	------

Latest field data		ML
pH		Minimum sensor level
EC	us/cm	Minimum pump level
TSS	mg/L	Spillway
OG	mg/L	Current level

Notes

In accordance with the approved Water Management Plan, the catchment of HWD9 has been disturbed as part of mine progression and HWD9 is no longer a clean water dam

HWD Recorded Data



Data range of report	1/10/2024 to 31/12/2024	Rainfall Depth (mm)	124.6
----------------------	-------------------------	---------------------	-------

Dam Name	HWD10
----------	-------

Latest field data			
pH		Minimum sensor level	
EC	us/cm	Minimum pump level	
TSS	mg/L	Spillway	
OG	mg/L	Current level	

Notes

In accordance with the approved Water Management Plan, the catchment of HWD10 has been disturbed as part of mine progression and HWD10 is no longer a clean water dam



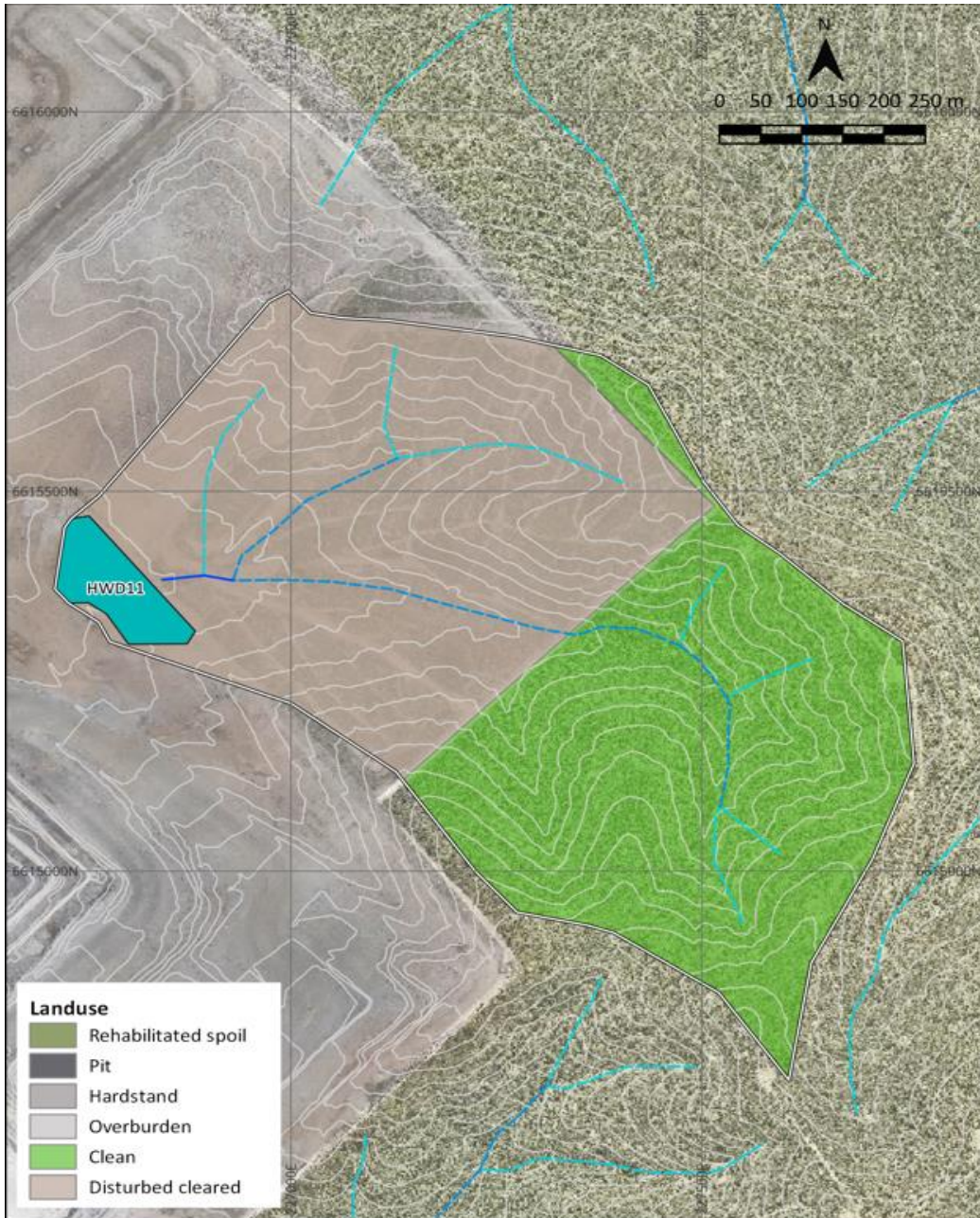
Data range of report 1/10/2024 to 31/12/2024 Rainfall Depth (mm) 124.6

Dam Name HWD11

Latest field data			ML
pH		Minimum sensor level	
EC	us/cm	Minimum pump level	
TSS	mg/L	Spillway	
OG	mg/L	Current level	

Notes

In accordance with the approved Water Management Plan, the catchment of HWD11 has been disturbed as part of mine progression and HWD11 is no longer a clean water dam



Title: HWD11 2024 Catchment and Landuse Mapping

Project: Maules Creek Coal Mine Highwall Dams

HydroBalance

Legend

- Mine Water Dam
- Sediment Dam
- Raw/Clean Water Dam
- Catchment
- Ground contour (5m interval)

Stream order

- First order
- Second order
- Third order
- Fourth order
- Fifth order
- Sixth order+

Data range of report	1/10/2024 to 31/12/2024	Rainfall Depth (mm)	124.6
-----------------------------	--------------------------------	----------------------------	--------------

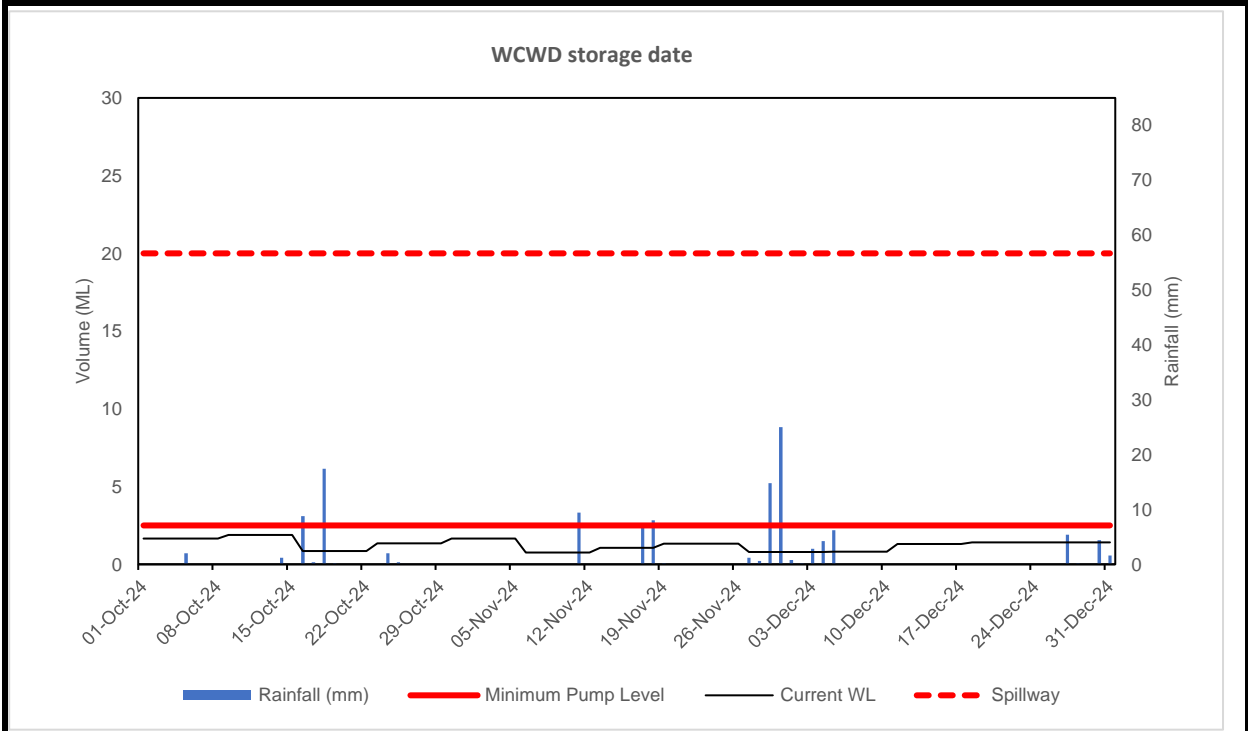
Dam Name

WCWD

Latest field data			ML
pH		8.4	Minimum sensor level
EC	us/cm	1760	Minimum pump level
TSS	mg/L	60	Spillway
OG	mg/L	<5	Current level

Notes

1.7 ML of inflows compared to 2.4 ML pumped to site as water quality exceeded EPL conditions



Latest Photo



